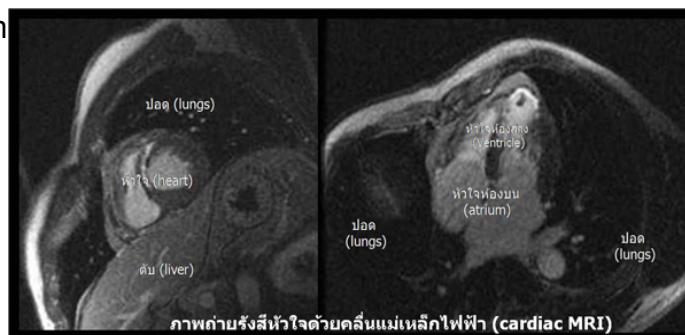


## What is Cardiac MRI?

Watch this VDO <https://www.youtube.com/watch?v=jxvTha2F8QQ&feature=youtu.be>

Magnetic resonan



ce imaging (MRI) is a safe, noninvasive test that creates detailed pictures of your organs and tissues. "Noninvasive" means that no surgery is done and no instruments are inserted into your body. MRI uses radio waves, magnets, and a computer to create sophisticated images of your organs and tissues. Unlike computed tomography (CT) scans and standard x rays, MRI doesn't use ionizing radiation (x-ray) or carry any risk of causing cancer. Cardiac MRI creates pictures of your heart as it is beating, producing both still and moving pictures of your heart and major blood vessels. Doctors use cardiac MRI to get pictures of the beating heart and to look at its structure and function. Cardiac MRI is used to diagnose a variety of cardiovascular disease such as coronary artery disease, valvular heart disease, some type of congenital heart disease as well as peripheral arterial diseases.

## Indication of the cardiac MRI

Cardiac MRI can help in the treatment of your patients with the following indications:

- Patient who is suspected coronary artery disease and unable to undergo contrast media injection by CT.
- Patient with known or suspected coronary artery disease who has uninterpretable EKG or is unable to exercise.
- Patient with suspected great vessel disease or peripheral vessel disease.
- Patient with suspected pericardial abnormalities.
- Characterization of cardiac mass/tumor
- Diagnosis of suspected congenital cardiac disease.

### Cardiac MRI contraindications

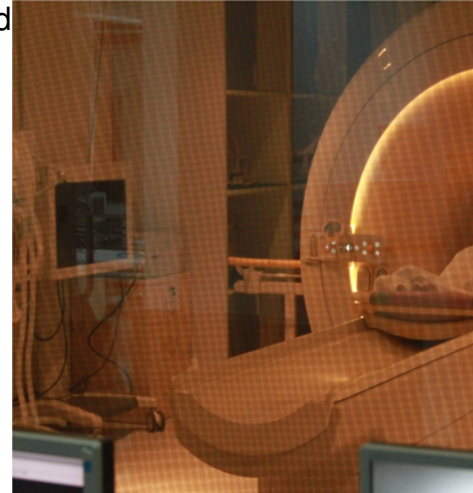
Cardiac MRI is safe with joint replacements, coronary stents, sternal wires and most prosthetic heart valves. However, we cannot scan patients with these following conditions;

- Patients with pacemakers, defibrillators or other implanted electronic devices.
- Patients with prior neurosurgical clip placement.
- Patients with deep brain stimulator or vagal nerve stimulation.
- Patients with cochlear implantation.
- Patients with a history of metallic implants or shrapnel.

### **What would you expect before Cardiac MRI exam?**

- You will be asked to arrive 30 minutes prior to your scheduled scan time. This will allow you to complete any necessary paperwork and discuss/prepare for your exam with the technologist and nurse.
- You are required to be fasting (no food/drink) for 6 hours and caffeine free for 24 hours.
- If you are pregnant please notify our staff.
- You will be required to remove hearing aids, eyeglasses prior to scan. It would be best to leave jewelry and other valuables at home. All electronic devices and metal objects are forbidden to be with you while we do the MRI scanning.

- You will be required to change into a hospital gown.
- All make up including mascara and eye shadow must be removed



- The examination ordinarily takes between 30 and 60 minutes to complete.

### What would I experience during Cardiac MRI exam?

- The technologist will escort you into the scanner room and position you on the scanning table. Your head will be placed in a padded plastic cradle or on a pillow and the table will slide into the scanner.
- The technologist will leave the room, but they can see you through the observation window and will communicate with you periodically during the scan through an microphone.

- While the scanner is taking your pictures, you will hear rapidly repeating, loud noises coming from the walls of the scanner, therefore earplugs will be provided.
  
- Any movement, especially of your head or back during this time will seriously blur the pictures.
  
- During scanning, you should breathe quietly and normally. Some exams may require you to hold your breath for a short time.
  
- If your exam was ordered with the use of contrast, a trained nurse will administer it through the IV in your arm about halfway through the exam. MRI contrast is very safe and usually does not cause any allergic reactions.

### **What would you expect after the Cardiac MRI exam?**

1. After examination you can drink regular water or any kind of food.
  
2. Any abnormal symptom occur after the examination please kindly contact cardiac MRI center

**Our Service:**

Operating days and hours:

Mon-Fri 8.00-16.00