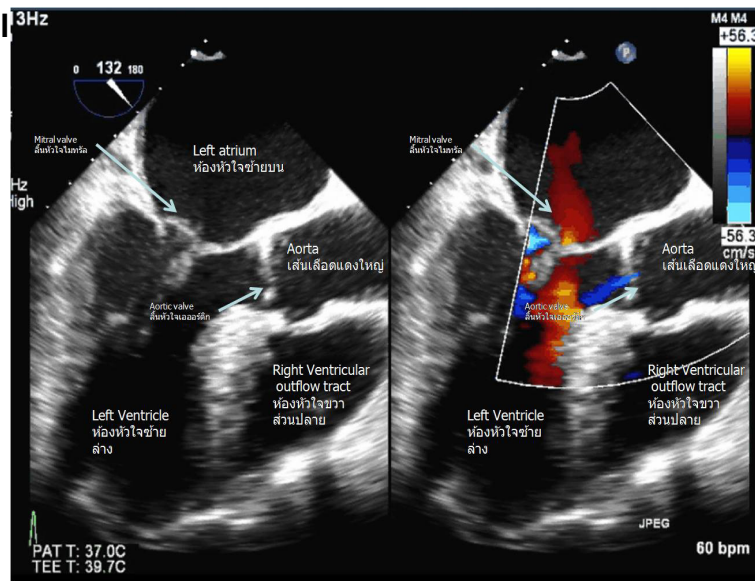


What is transesophageal



echocardiogram (TEE)?

ANSWER: WATCH this Video ! <https://www.youtube.com/watch?v=EAarvQynTH4>

As opposed to the standard echocardiogram, in which the transducer is placed over the chest wall, in TEE the transducer is passed into the esophagus (swallowing pipe) and is positioned directly behind the heart. The transducer bounces sound waves off the heart and images of the cardiac structures are produced. TEE is useful in patients in whom adequate echo images cannot be obtained by standard echo techniques.

Are you eligible for this procedure?

Patients with structural heart disease with an inadequate information from standard transthoracic echocardiogram may need TEE. Patient with bleeding tendency, esophageal disease, difficult swallowing, some drug allergy, C-spine (Neck instability) diseases, rheumatoid arthritis may be contraindicated for the TEE.

Any side effects or adverse risks? The complication is rare. However,

the following conditions can occur.

§ Transient throat pain or difficult swallowing

